

CERTIFICATE OF ANALYSIS

ISO/IEC 17025:2017 ACCREDITATION #103104



Order #: 86714
 Order Name: Provida Daily Caps 750mg
 Batch#: SG-22321-B1
 Received: 10/30/2021
 Completed: 11/09/2021

Provida Health
 757 SE 17th Street Suite 289
 Fort Lauderdale FL, 33316



Sample



0.200%
Total D9-THC

5.480%
Total CBD

1,249.1 mg
Cannabinoids per Bottle

1,150.8 mg
CBD per Bottle

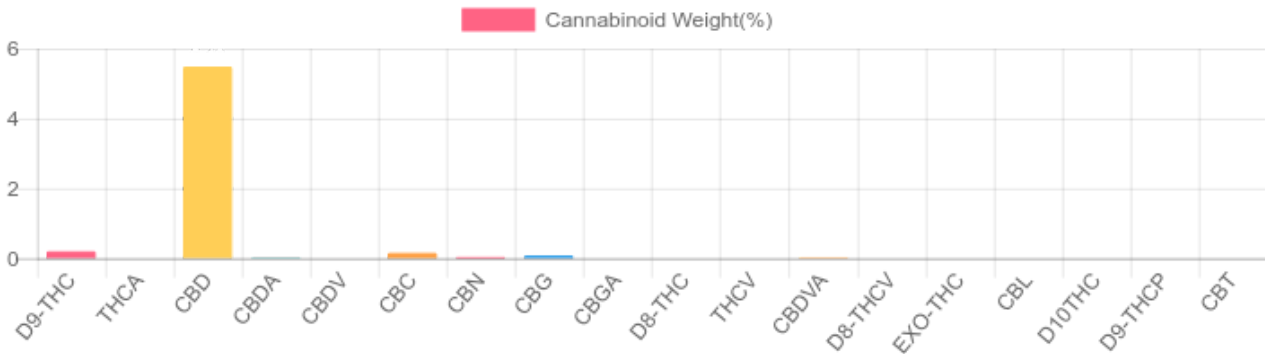
1 Bottle = 21 grams per Bottle x
 Cannabinoid concentration

Cannabinoids Test

HPLC-DAD
 GSL SOP 400

UPLOADED: 11/09/2021 09:10:53

Cannabinoids	LOQ(mg/g)	LOD(mg/g)	weight(%)	mg/g	mg/Bottle
D9-THC	0.1954	0.0645	0.200%	1.997	41.937
THCA	0.1954	0.0645	N/D	N/D	N/D
CBD	0.1954	0.0645	5.480%	54.800	1,150.800
CBDA	0.1954	0.0645	B/LOQ	B/LOQ	B/LOQ
CBDV	0.1954	0.0645	N/D	N/D	N/D
CBC	0.1954	0.0645	0.154%	1.536	32.256
CBN	0.1954	0.0645	0.034%	0.343	7.203
CBG	0.1954	0.0645	0.081%	0.805	16.905
CBGA	0.1954	0.0645	N/D	N/D	N/D
D8-THC	0.1954	0.0645	N/D	N/D	N/D
THCV	0.1954	0.0645	N/D	N/D	N/D
CBDVA	0.1954	0.0645	B/LOQ	B/LOQ	B/LOQ
D8-THCV	0.1954	0.0645	N/D	N/D	N/D
EXO-THC	0.1954	0.0645	N/D	N/D	N/D
CBL	0.1954	0.0645	N/D	N/D	N/D
D10THC	0.1954	0.0645	N/D	N/D	N/D
D9-THCP	0.1954	0.0645	N/D	N/D	N/D
CBT	0.1954	0.0645	N/D	N/D	N/D
TOTAL D9-THC			0.200%	0.200%	41.9
TOTAL CBD*			5.480%	54.800	1,150.8
TOTAL CANNABINOIDS			5.949%	59.481	1,249.1



*Total CBD = CBD + CBDA x 0.877
 N/D - Not Detected, B/LOQ - Below Limit of Quantification

Ben Witten, MS, MT., Lab Director

Green Scientific Labs
 info@greenscientificlabs.com
 1-833 TEST CBD



CERTIFICATE OF ANALYSIS

ISO/IEC 17025:2017 ACCREDITATION #103104



Order #: 86714
 Order Name: Provida Daily
 Caps 750mg
 Batch#: SG-22321-B1
 Received: 10/30/2021
 Completed: 11/09/2021

Provida Health
 757 SE 17th Street Suite 289
 Fort Lauderdale FL, 33316



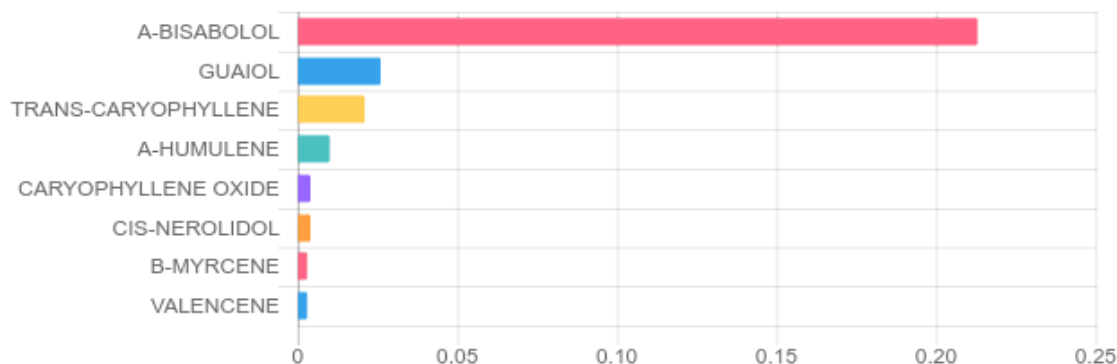
TERPENES: TOTAL (0.292%)

GSL SOP 404
 Uploaded: 11/02/2021 09:46:25

GC-FID

Terpene	Results (%)	LOQ (%)	LOD (%)	Terpene	Results (%)	LOQ (%)	LOD (%)
3-CARENE	N/D	0.003%	0.001%	GERANIOL	N/D	0.003%	0.001%
A-BISABOLOL	0.213%	0.003%	0.001%	GERANYL ACETATE	N/D	0.003%	0.001%
A-CEDRENE	N/D	0.003%	0.001%	GUAIOL	0.026%	0.003%	0.001%
A-HUMULENE	0.010%	0.003%	0.001%	HEXAHYDROTHYMOL	N/D	0.003%	0.001%
A-PINENE	B/LOQ	0.003%	0.001%	ISOBORNEOL	N/D	0.003%	0.001%
A-TERPINENE	N/D	0.003%	0.001%	ISOPULEGOL	N/D	0.003%	0.001%
B-MYRCENE	0.003%	0.003%	0.001%	LIMONENE	N/D	0.003%	0.001%
B-PINENE	N/D	0.003%	0.001%	LINALOOL	B/LOQ	0.003%	0.001%
BORNEOL (MIX OF ISOMERS)	N/D	0.003%	0.001%	NEROL	N/D	0.003%	0.001%
CAMPHENE	N/D	0.003%	0.001%	P-MENTHA-1, 5-DIENE	B/LOQ	0.003%	0.001%
CAMPHOR (MIX OF ISOMERS)	N/D	0.003%	0.001%	PULEGONE (+)	N/D	0.003%	0.001%
CARYOPHYLLENE OXIDE	0.004%	0.003%	0.001%	SABINENE HYDRATE	N/D	0.003%	0.001%
CEDROL	N/D	0.003%	0.001%	TERPINEOL (MIX OF ISOMERS)	B/LOQ	0.003%	0.001%
CIS-NEROLIDOL	0.004%	0.003%	0.001%	TERPINOLENE	N/D	0.003%	0.001%
CIS-OCIMENE	N/D	0.003%	0.001%	TRANS-CARYOPHYLLENE	0.021%	0.003%	0.001%
ENDO-FENCHYL ALCOHOL	B/LOQ	0.003%	0.001%	TRANS-NEROLIDOL	B/LOQ	0.003%	0.001%
EUCALYPTOL	N/D	0.003%	0.001%	TRANS-OCIMENE	N/D	0.003%	0.001%
FENCHONE (MIX OF ISOMERS)	N/D	0.003%	0.001%	VALENCENE	0.003%	0.003%	0.001%
GAMMA-TERPINENE	N/D	0.003%	0.001%				

Top Terpenes Results:



Ben Witten, MS, MT., Lab Director

Green Scientific Labs
 info@greenscientificlabs.com
 1-833 TEST CBD



This COA is governed by the terms and conditions listed on: <https://www.greenscientificlabs.com/terms-of-use.php>

CERTIFICATE OF ANALYSIS

ISO/IEC 17025:2017 ACCREDITATION #103104



Order #: 86714
 Order Name: Provida Daily
 Caps 750mg
 Batch#: SG-22321-B1
 Received: 10/30/2021
 Completed: 11/09/2021

Provida Health
 757 SE 17th Street Suite 289
 Fort Lauderdale FL, 33316



PESTICIDE ANALYSIS:

GSL SOP 401

PREPARED: 11/01/2021 16:49:33

UPLOADED: 11/05/2021 13:42:33

GC-MS/MS

Pesticide	Action Level (ppm)	Results (ppm)	LOQ (ppm)	LOD (ppm)
CAPTAN	3.000	N/D	0.100	0.010
CHLORDANE	0.100	N/D	0.100	0.010
CHLORFENAPYR	0.100	N/D	0.100	0.010
COUMAPHOS	0.100	N/D	0.100	0.010

Pesticide	Action Level (ppm)	Results (ppm)	LOQ (ppm)	LOD (ppm)
CYFLUTHRIN	1.000	N/D	0.100	0.010
CYPERMETHRIN	1.000	N/D	0.100	0.010
PENTACHLORONITROBENZENE	0.200	N/D	0.100	0.010

LC-MS/MS

Pesticide	Action Level (ppm)	Results (ppm)	LOQ (ppm)	LOD (ppm)
ABAMECTIN B1A	0.300	N/D	0.005	0.005
ACEPHATE	3.000	N/D	0.005	0.001
ACEQUINOCYL	2.000	N/D	0.005	0.005
ACETAMIPRID	3.000	N/D	0.005	0.005
ALDICARB	0.100	N/D	0.005	0.005
AZOXYSTROBIN	3.000	N/D	0.005	0.001
BIFENAZATE	3.000	N/D	0.005	0.001
BIFENTHRIN	0.500	N/D	0.005	0.005
BOSCALID	3.000	N/D	0.005	0.005
CARBARYL	0.500	N/D	0.005	0.001
CARBOFURAN	0.100	N/D	0.005	0.001
CHLORANTRANILIPROLE	3.000	N/D	0.005	0.005
CHLORMEQUAT CHLORIDE	3.000	N/D	0.250	0.100
CHLORPYRIFOS	0.100	N/D	0.005	0.005
CLOFENTEZINE	0.500	N/D	0.005	0.005
DAMINOZIDE	0.100	N/D	0.005	0.001
DIAZINON	0.200	N/D	0.005	0.005
DICHLORVOS	0.100	N/D	0.005	0.001
DIMETHOATE	0.100	N/D	0.005	0.001
DIMETHOMORPH	3.000	N/D	0.005	0.001
ETHOPROPHOS	0.100	N/D	0.005	0.001
ETOFENPROX	0.100	N/D	0.005	0.005
ETOXAZOLE	1.500	N/D	0.050	0.005
FENHEXAMID	3.000	N/D	0.005	0.001
FENOXYCARB	0.100	N/D	0.005	0.005
FENPYROXIMATE	2.000	N/D	0.005	0.005
FIPRONIL	0.100	N/D	0.005	0.005
FLONICAMID	2.000	N/D	0.025	0.005
FLUDIOXONIL	3.000	N/D	0.005	0.005
HEXYTHIAZOX	2.000	N/D	0.005	0.005

Pesticide	Action Level (ppm)	Results (ppm)	LOQ (ppm)	LOD (ppm)
IMAZALIL	0.100	N/D	0.005	0.001
IMIDACLOPRID	3.000	N/D	0.005	0.001
KRESOXIM-METHYL	1.000	N/D	0.005	0.005
MALATHION	2.000	N/D	0.005	0.001
METALAXYL	3.000	N/D	0.005	0.001
METHIOCARB	0.100	N/D	0.005	0.001
METHOMYL	0.100	N/D	0.005	0.001
MEVINPHOS	0.100	N/D	0.005	0.001
MYCLOBUTANIL	3.000	N/D	0.005	0.005
NALED	0.500	N/D	0.005	0.001
OXAMYL	0.500	N/D	0.005	0.001
PACLOBUTRAZOL	0.100	N/D	0.005	0.005
PERMETHRINS	1.000	N/D	0.005	0.005
PHOSMET	0.200	N/D	0.005	0.001
PIPERONYL BUTOXIDE	3.000	0.048	0.005	0.005
PRALLETHRIN	0.400	N/D	0.005	0.005
PROPICONAZOLE	1.000	N/D	0.010	0.005
PROPOXUR	0.100	N/D	0.005	0.001
PYRETHRINS	1.000	N/D	0.005	0.001
PYRIDABEN	3.000	N/D	0.005	0.005
SPINETORAM	3.000	N/D	0.005	0.005
SPINOSAD	3.000	N/D	0.005	0.005
SPIROMESIFEN	3.000	N/D	0.005	0.001
SPIROTETRAMAT	3.000	N/D	0.005	0.005
SPIROXAMINE	0.100	N/D	0.005	0.001
TEBUCONAZOLE	1.000	N/D	0.005	0.001
THIACLOPRID	0.100	N/D	0.005	0.001
THIAMETHOXAM	1.000	N/D	0.005	0.001
TRIFLOXYSTROBIN	3.000	N/D	0.005	0.005

N/D = Not Detected, A/LOQ = Above LOQ Level, B/LOQ = Below LOQ Level, B/LOD = Below LOD Level

Ben Witten, MS, MT., Lab Director

Green Scientific Labs
 info@greenscientificlabs.com
 1-833 TEST CBD



This COA is governed by the terms and conditions listed on: <https://www.greenscientificlabs.com/terms-of-use.php>

CERTIFICATE OF ANALYSIS

ISO/IEC 17025:2017 ACCREDITATION #103104



Order #: 86714
Order Name: Provida Daily
Caps 750mg
Batch#: SG-22321-B1
Received: 10/30/2021
Completed: 11/09/2021

Provida Health
757 SE 17th Street Suite 289
Fort Lauderdale FL, 33316



RESIDUAL SOLVENTS:

HS-GC-MS

GSL SOP 405

Uploaded: 11/04/2021 17:30:26

Residual Solvent	Action Level (ppm)	Results (ppm)	LOQ (ppm)	LOD (ppm)
1,1-DICHLOROETHENE	8	N/D	0.63	0.6
1,2-DICHLOROETHANE	2	N/D	0.12	0.012
1,2-DICHLOROETHENE	5	N/D	0.73	0.09
ACETONE	5,000	N/D	140	9
ACETONITRILE	410	N/D	25	0.72
BENZENE	1	N/D	1	0.6
BUTANE	5,000	N/D	50	48
CHLOROFORM	1	N/D	1	0.5
ETHANOL	5,000	N/D	140	12
ETHYL ACETATE	5,000	N/D	140	2.4
ETHYL ETHER	5,000	N/D	140	6
ETHYLENE OXIDE	1	N/D	2	0.6
ISOPROPYL ALCOHOL	5,000	N/D	140	3
METHANOL	3,000	N/D	100	6
METHYLENE CHLORIDE	125	N/D	1.5	1.5
N-HEPTANE	5,000	N/D	140	6
N-HEXANE	290	N/D	18	0.06
PENTANE	5,000	N/D	140	9
PROPANE	5,000	N/D	30	30
TOLUENE	890	N/D	53	0.9
TRICHLOROETHENE	1	N/D	1	0.3
XYLENES	150	N/D	130	1.8

Ben Witten, MS, MT., Lab Director

Green Scientific Labs
info@greenscientificlabs.com
1-833 TEST CBD



This COA is governed by the terms and conditions listed on: <https://www.greenscientificlabs.com/terms-of-use.php>

CERTIFICATE OF ANALYSIS

ISO/IEC 17025:2017 ACCREDITATION #103104



Order #: 86714
Order Name: Provida Daily
Caps 750mg
Batch#: SG-22321-B1
Received: 10/30/2021
Completed: 11/09/2021

Provida Health
757 SE 17th Street Suite 289
Fort Lauderdale FL, 33316



Microbial Analysis:

Microbial Analysis GSL SOP 406

Uploaded: 11/01/2021 17:56:31

MICROBIAL ANALYSIS:

Test	SOP	Test Method	Device Used	LOD	Actual Result
TOTAL YEAST AND MOLD	406.01	USP 61/62†	ARIAMX PCR	1,000 CFU/G	< 1,000 CFU/G
LISTERIA MONOCYTOGENES	406.01		ARIAMX PCR	2 COPIES OF DNA	NOT DETECTED
STEC E. COLI*	406.01	USP 61/62†	ARIAMX PCR	1 CFU/G**	NOT DETECTED
PATHOGENIC E. COLI	406.01	USP 61/62†	ARIAMX PCR	1 CFU/G**	NOT DETECTED
SALMONELLA*	406.01	USP 61/62†	ARIAMX PCR	1 CFU/G**	NOT DETECTED

† USP 61 (enumeration of bacteria TAC, TYM, and ENT/Coliform), USP 62 (identifying specific species E.coli Aspergillus etc)

* STEC and Salmonella run as Multiplex

** CFU/g Calculation based on MIP/Extract matrix

Ben Witten, MS, MT., Lab Director

Green Scientific Labs
info@greenscientificlabs.com
1-833 TEST CBD



This COA is governed by the terms and conditions listed on: <https://www.greenscientificlabs.com/terms-of-use.php>

CERTIFICATE OF ANALYSIS

ISO/IEC 17025:2017 ACCREDITATION #103104



Order #: 86714
Order Name: Provida Daily
Caps 750mg
Batch#: SG-22321-B1
Received: 10/30/2021
Completed: 11/09/2021

Provida Health
757 SE 17th Street Suite 289
Fort Lauderdale FL, 33316



Mycotoxin Analysis:

LC-MS/MS
GSL SOP 401

Uploaded: 11/02/2021 10:22:54

Analyte	LOQ (ppb)	LOD (ppb)	Action Lvl (ppb)	Results (ppb)
AFLATOXIN B1	1	1	20	N/D
AFLATOXIN B2	1	1	20	N/D
AFLATOXIN G1	1	1	20	N/D
AFLATOXIN G2	1	1	20	N/D
OCHRATOXIN A	1	1	20	N/D

Heavy Metals Analysis:

ICP-MS
GSL SOP 403

Uploaded: 11/03/2021 20:28:00

Metal	LOQ (ppb)	LOD (ppb)	Action Level (ppb)	Result (ppb)
ARSENIC (AS)	75	20	200	N/D
CADMIUM (CD)	75	20	200	N/D
MERCURY (HG)	75	20	100	N/D
LEAD (PB)	75	20	500	B/LOQ

Moisture Analysis:

Shimadzu MOC63U Moisture Balance - GSL SOP 411

Uploaded: 10/30/2021 19:36:28

Moisture %

2.7%

Water Activity:

Water Activity Meter

Uploaded: 10/30/2021 19:36:29

Water

0.52

Filth and Foreign Materials Analysis:

Microscope - Amscope Simul-Focal Trinocular Stereo Zoom Microscope - GSL SOP 409

Uploaded: 10/30/2021 19:35:39

Pass: No Foreign Materials Detected

Ben Witten, MS, MT., Lab Director

Green Scientific Labs
info@greenscientificlabs.com
1-833 TEST CBD



This COA is governed by the terms and conditions listed on: <https://www.greenscientificlabs.com/terms-of-use.php>